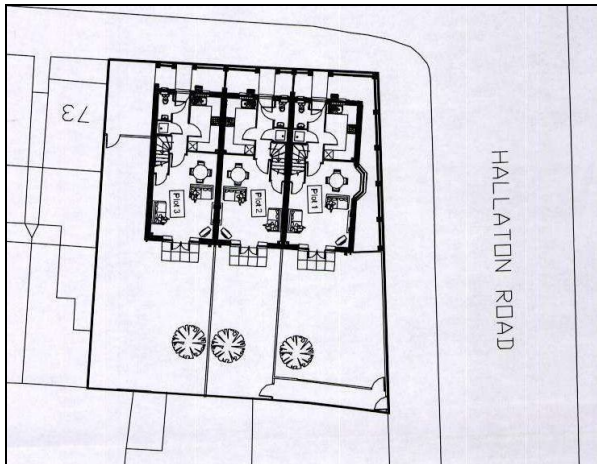




**FOR SALE
TURNER ROAD, LEICESTER**

OIEO £200,000



PRICE

Offers in excess of £200,000 are sought for the land with the benefit of planning approval.

LEGAL COSTS

Each party to bear their own.

VIEWING

The site is visible from the street however should a more detailed inspection be required then please contact Jarroms on 0116 2221999.

EPC

Not applicable.

LOCATION

The site is some 2 miles from the City Centre just off the A47 Uppingham Road within the popular residential area of Humberstone.

Currently a block of lock-up garages the site occupies a corner plot on the corner of Turner and Hallaton Road.

DESCRIPTION

The site is approximately 404 m² of essentially level ground currently comprising disused lock-up garages.

Planning consent has been granted for a small terrace of 3 three storey houses and full details can be viewed on the Leicester City Council Website as follows:

www.leicester.gov.uk/planning

application number: 20100229

